

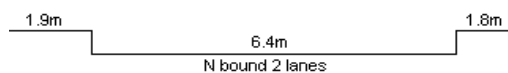
YEAR 2013

COVERAGE (B) STATION 2403

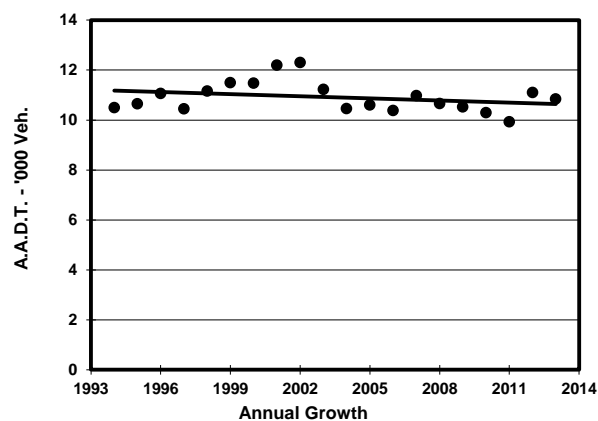
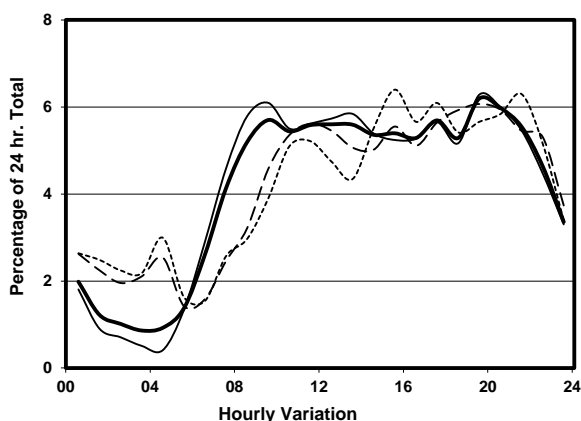
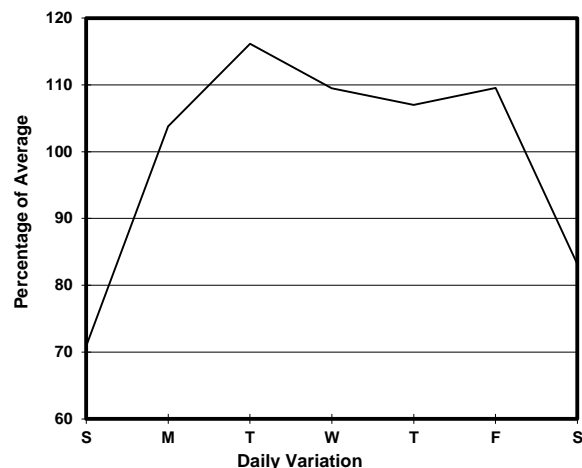
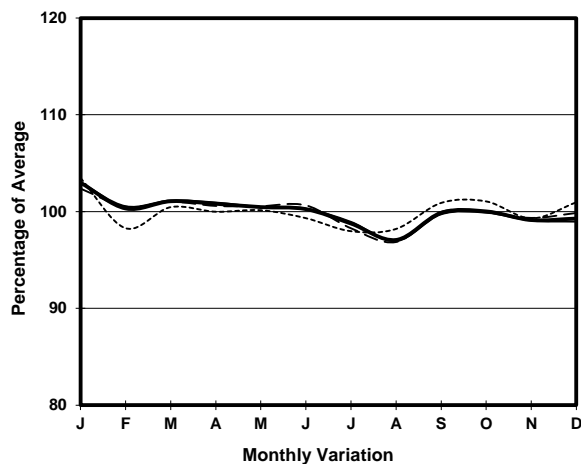
ROAD NETWORK MINOR

ROAD TYPE LOCAL DISTRIBUTOR

LINK ICE HOUSE ST (from CONNAUGHT RD C to LOWER ALBERT RD)



## 1. TRAFFIC FLOW VARIATION AND GROWTH



## 2. TRAFFIC CHARACTERISTICS (BY DIRECTION)

Parameter	All - Day	Mon. - Fri.	Sat.	Sun.
<b>NORTH BOUND</b>				
A.A.D.T.	10840	12030	9160	7810
R 12 / 24 - %	64.3	65.9	59	57.9
R 16 / 24 - %	86.6	88.1	81.8	80.9
AM Peak Hour	0900-1000	0900-1000	0900-1000	0900-1000
One-way flow at AM peak hour	620	730	420	310
T - % (AM)	-	9.7	-	-
PM Peak Hour	1700-1800	1700-1800	1800-1900	1700-1800
One-way flow at PM peak hour	620	680	540	480
T - % (PM)	-	9.2	-	-
Prop.of commercial vehicles - 16 hr.	-	7.3	-	-
 A.A.D.T.	-	-	-	-
R 12 / 24 - %	-	-	-	-
R 16 / 24 - %	-	-	-	-
AM Peak Hour	-	-	-	-
One-way flow at AM peak hour	-	-	-	-
T - % (AM)	-	-	-	-
PM Peak Hour	-	-	-	-
One-way flow at PM peak hour	-	-	-	-
T - % (PM)	-	-	-	-
Prop.of commercial vehicles - 16 hr.	-	-	-	-

## 3. OTHER INFORMATION AND COMMENT

**4. Vehicle classification and occupancy - Monday to Friday**

Time		Class of vehicle									
		Motor Cycle	Private Car	Taxi	Private LB	PLB	Goods veh.		Non Fr. Bus	Fr. Bus	
							Light	M & H		SD	DD
0700-0800	Pro	0.0	12.7	65.4	0.0	10.7	4.9	0.0	5.9	0.0	0.5
	Ocp	0.0	1.7	2.0	0.0	12.0	1.4	0.0	7.0	0.0	18.5
0800-0900	Pro	0.0	23.0	47.5	1.6	9.0	4.1	0.0	13.9	0.0	0.8
	Ocp	0.0	1.9	1.9	10.5	13.1	1.4	0.0	12.5	0.0	15.3
0900-1000	Pro	0.0	35.0	41.8	0.6	7.4	5.5	1.2	8.0	0.0	0.5
	Ocp	0.0	1.7	2.0	10.0	11.8	1.8	2.0	10.4	0.0	15.3
1000-1100	Pro	0.0	29.8	48.3	0.0	6.4	7.1	0.7	7.1	0.0	0.5
	Ocp	0.0	1.6	1.7	0.0	9.7	1.5	2.0	5.8	0.0	4.3
1100-1200	Pro	1.4	30.1	41.3	0.7	9.1	9.8	0.7	6.3	0.0	0.5
	Ocp	1.0	1.8	2.0	13.0	9.5	2.0	1.0	9.3	0.0	6.7
1200-1300	Pro	1.5	40.7	34.7	0.0	9.0	8.3	0.8	4.5	0.0	0.6
	Ocp	1.0	1.5	1.8	0.0	11.3	1.8	1.0	5.3	0.0	9.7
1300-1400	Pro	1.6	25.3	54.6	0.8	9.0	1.6	0.0	6.5	0.0	0.6
	Ocp	1.0	1.5	1.5	1.0	9.7	1.0	0.0	5.8	0.0	9.3
1400-1500	Pro	0.0	27.7	49.3	0.7	9.5	6.1	0.7	5.4	0.0	0.7
	Ocp	0.0	1.3	1.7	3.0	7.1	1.7	2.0	5.8	0.0	9.5
1500-1600	Pro	0.0	41.9	33.7	0.0	9.7	8.2	0.8	5.2	0.0	0.4
	Ocp	0.0	1.6	1.9	0.0	7.1	1.8	1.0	7.3	0.0	12.0
1600-1700	Pro	1.4	45.0	27.1	0.0	10.0	6.4	0.7	8.6	0.0	0.7
	Ocp	1.0	1.2	1.6	0.0	9.6	2.2	2.0	8.6	0.0	16.8
1700-1800	Pro	0.7	37.7	35.7	0.7	12.1	4.0	0.7	8.1	0.2	0.2
	Ocp	1.0	1.4	2.0	3.0	13.2	1.8	1.0	7.4	28.0	11.0
1800-1900	Pro	1.2	40.8	38.4	0.0	8.7	1.7	0.0	8.7	0.0	0.4
	Ocp	1.0	1.3	1.8	0.0	13.4	2.0	0.0	5.9	0.0	16.7
1900-2000 Peak hour	Pro	0.0	26.8	55.3	0.0	8.2	1.7	1.2	6.4	0.1	0.3
	Ocp	0.0	1.2	1.4	0.0	8.4	2.0	2.5	4.5	18.0	6.0
2000-2100	Pro	1.4	9.0	75.7	0.7	9.0	0.0	0.7	2.8	0.2	0.5
	Ocp	1.0	1.4	1.4	1.0	7.2	0.0	2.0	4.0	14.0	3.7
2100-2200	Pro	2.6	13.7	76.2	0.0	6.0	0.0	0.0	0.9	0.2	0.4
	Ocp	1.0	1.4	1.6	0.0	9.0	0.0	0.0	3.0	4.0	9.5
2200-2300	Pro	0.0	12.5	76.3	0.0	8.6	1.6	0.8	0.0	0.0	0.4
	Ocp	0.0	1.4	1.6	0.0	6.5	1.5	1.0	0.0	0.0	7.5
16 hours	Pro	0.7	28.9	49.3	0.4	8.9	4.4	0.6	6.2	0.1	0.5
	Ocp	1.0	1.5	1.7	6.5	10.0	1.8	1.7	7.6	16.0	10.9

**Legend**

**Pro.** Proportion of vehicles in % (Sum may not add up to 100% due to figure rounding)  
**Ocp.** Average occupancy of vehicles  
**M&H** Medium and Heavy